

# Ieskats ES Atmežošanas regulas (EUDR) aspektos.

**04.04.2024**

Jānis Švirksts

# Deforestation Regulation implementation

- The new EU Deforestation Regulation (EUDR) is an important turning point in the global fight against deforestation. It will start to apply on 30 December 2024.



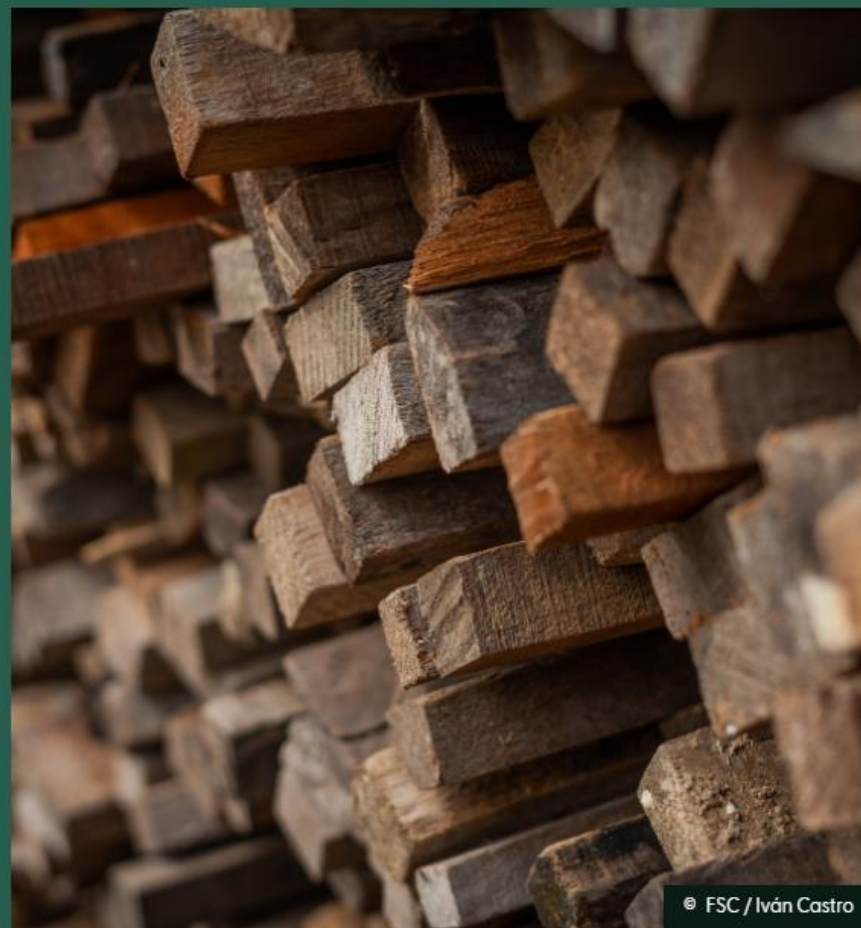
- [https://green-business.ec.europa.eu/deforestation-regulation-implementation\\_en](https://green-business.ec.europa.eu/deforestation-regulation-implementation_en)
- <https://www.farmerconnect.com/eu-deforestation-regulation>

# Sertifikācijas sistēmas, iestādes un EUDR

## Introducing: FSC EUDR Aligned Early Adopter Programme

First round of applications open until 28 March

[Apply here →](#)



© FSC / Iván Castro

# The FSC EUDR Aligned Early Adopter Programme

- Are you an FSC certificate holder and need to comply with the upcoming EU Regulation on Deforestation-free Products (EUDR)? You might qualify to become an **early adopter of FSC EUDR Aligned**.
- Since the EUDR came into force in June 2023, FSC has been dedicated to strengthening its system and developing new technologies to support our certificate holders to meet these requirements. [FSC EUDR Aligned](#) will provide a set of integrated tools to tens of thousands of companies – at different points along the value chain and with vastly different needs – to help meet EUDR legality, sustainability, and due diligence obligations.
- **We are ready to onboard a select number of companies to start testing our solutions.**
- <https://fsc.org/en/newscentre/eudr/introducing-fsc-eudr-aligned-early-adopter-programme>



# PEFC un EUDR

- Our standards are already well positioned to meet many key elements of the EUDR, and we are working intensively to align them more closely with EUDR requirements. PEFC chain of custody certified companies and PEFC certified forest owners will soon be able to benefit from our practical solutions to enable them to successfully implement EUDR.

- <https://pefc.org/eudr>

PEFC - your partner for the EUDR



PEFC, committed to deforestation-free

At PEFC, we have a longstanding commitment to halting deforestation through the promotion of sustainable forest management and products that do not contribute to forest loss. We are committed to continuing this work and strongly support the objectives of the EU Regulation on Deforestation-free Products (EUDR).

# RSPO un RA

## SUSTAINABLE PALM OIL PLAYERS DISCUSS IMPLEMENTATION OF EU DEFORESTATION REGULATION

15 JUNE 2023

### How the Rainforest Alliance Supports EUDR Compliance from Farm to Retailer

Filed Under: [Certification](#) | Tagged: [Due Diligence](#), [Cocoa](#), [Coffee](#), [Deforestation](#)  
Last updated January 15, 2024



- <https://rspo.org/sustainable-palm-oil-players-discuss-implementation-of-eu-deforestation-regulation/>
- <https://www.rainforest-alliance.org/business/certification/how-the-rainforest-alliance-supports-eudr-compliance-from-farm-to-retailer/>

# From RSPO Meeting, London, March 2024

## 1. *Is RSPO certified material by definition EUDR compliant?*

No. A certification is never a guarantee and we maintain a different definition of “forest”. You always have your own responsibility to check with your supplier to assure (s)he can demonstrate compliance.

The regulation itself **explicitly recognises third party verified schemes as tools** which can be used by companies in their risk assessment, without substituting the operators’ legal responsibility with regards to due diligence. Beyond the risk assessment, there are **many other reasons why RSPO Certification will remain an important tool to demonstrate sustainability**, both for RSPO Members as well as for the National Competent Authorities responsible for monitoring compliance.



# EUDR vairs nav Monitoring organisation

Monitoring Organisation	Contact	Functions in:	Recognition date
<p><b><u><a href="#">AENOR INTERNACIONAL, S.A.U.</a></u></b>                      Calle Génova 6, 28004 Madrid,                      Spain</p>	<p>Marisa Novo Soto                      Técnico de soporte de certificación                      Dirección de Aseguramiento Técnico y                      Calidad                      Tel: +34 91 432 60 00                      Fax: +34 913 190 581                      Email: <a href="mailto:e-conform@aenor.es">e-conform@aenor.es</a> and  <a href="mailto:calidad@aenor.com">calidad@aenor.com</a>                      Website: <a href="http://www.aenor.com">www.aenor.com</a></p>	<p>ES, PT</p>	<p>19.10.2015</p>
<p><b>BM Certification SIA</b>                      Jurkalnes Street 15, Riga 1046,                      Latvia  <i>(Initially recognised under the                      name <a href="#">BM TRADA Latvija</a>)</i></p>	<p>Andra Ožeta                      BM Certification Accreditation manager                      Tel. +371 29125696 / +371 67772135                      Email: <a href="mailto:andra.ozeta@bmcertification.com">andra.ozeta@bmcertification.com</a>                      Website: <a href="http://www.bmcertification.lv">www.bmcertification.lv</a></p>	<p>All the EU                      Member                      States</p>	<p>01.06.2015</p>

- <https://circabc.europa.eu/ui/group/34861680-e799-4d7c-bbad-da83c45da458/library/f63fc23b-c278-4a22-9444-8711636403b9/details?download=true>



# Kompetentās iestādes

<b>Estonia</b>	<b>Environmental Board</b> – Competent Authority for wood and relevant wood products Roheline 64, 80010 Pärnu <a href="mailto:EUDR@kliimaministeerium.ee">EUDR@kliimaministeerium.ee</a> +372 662 5999
----------------	---

<b>Ireland</b>	<b>Department of Agriculture, Food and the Marine</b> Agriculture House Kildare Street Dublin 2 DO2WK12 <a href="mailto:eutr@agriculture.gov.ie">eutr@agriculture.gov.ie</a> +353 1 607 2000
<b>Italy</b>	<b>Ministero dell'agricoltura, della sovranità alimentare e delle foreste</b> Via XX Settembre, 20 00187 Roma +39 06 46651  Per la parte relativa al legno e ai prodotti legnosi : Direzione generale dell'economia montana e delle foreste <a href="mailto:difor.direzione@pec.politicheagricole.gov.it">difor.direzione@pec.politicheagricole.gov.it</a>  Per le "commodities" agroalimentari : Dipartimento dell'Ispettorato centrale della tutela della qualità e della repressione frodi dei prodotti agroalimentari <a href="mailto:icqrf.dipartimento@pec.politicheagricole.gov.it">icqrf.dipartimento@pec.politicheagricole.gov.it</a>
<b>Latvia</b>	
<b>Lithuania</b>	
<b>Luxembourg</b>	
<b>Malta</b>	
<b>Netherlands</b>	<b>NVWA</b> (Netherlands Food and Consumer Product Safety Authority) Catharijnesingel 59, 3511 GG Utrecht <a href="mailto:eutr@nvwa.nl">eutr@nvwa.nl</a> Tel: 0900-0388
<b>Poland</b>	

- <https://circabc.europa.eu/ui/group/34861680-e799-4d7c-bbad-da83c45da458/library/15b78f75-8f4e-4b3e-ab84-15f162311749/details>

# To ensure an effective implementation of the EU Deforestation Regulation, the European Commission is supported in its work by the following tools:

- **Tool No1. Multi-Stakeholder Platform on Protecting and Restoring the World's Forests** (Continuous dialogue between EU Member States, selected interested parties (mainly trade and business associations and NGOs), third countries and the European Commission)

# Tool No 2. EU observatory on deforestation and forest degradation

- Building on existing monitoring tools (e.g. Copernicus and other publicly or privately available sources) the observatory will facilitate access to information on supply chains for businesses, public entities and consumers
- <https://forest-observatory.ec.europa.eu/forest/ghm>





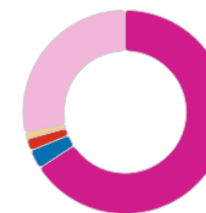


INDONESIA | Global Map of Forest Cover Changes and their Drivers

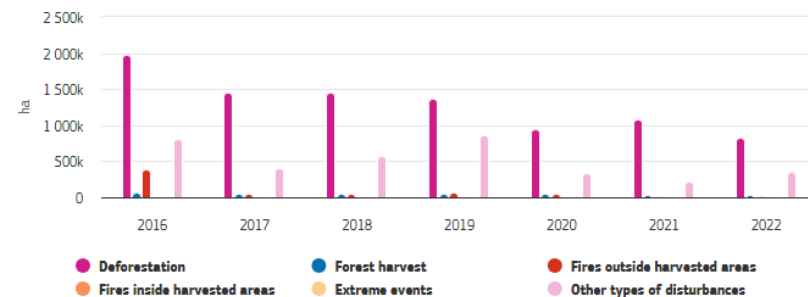
Info

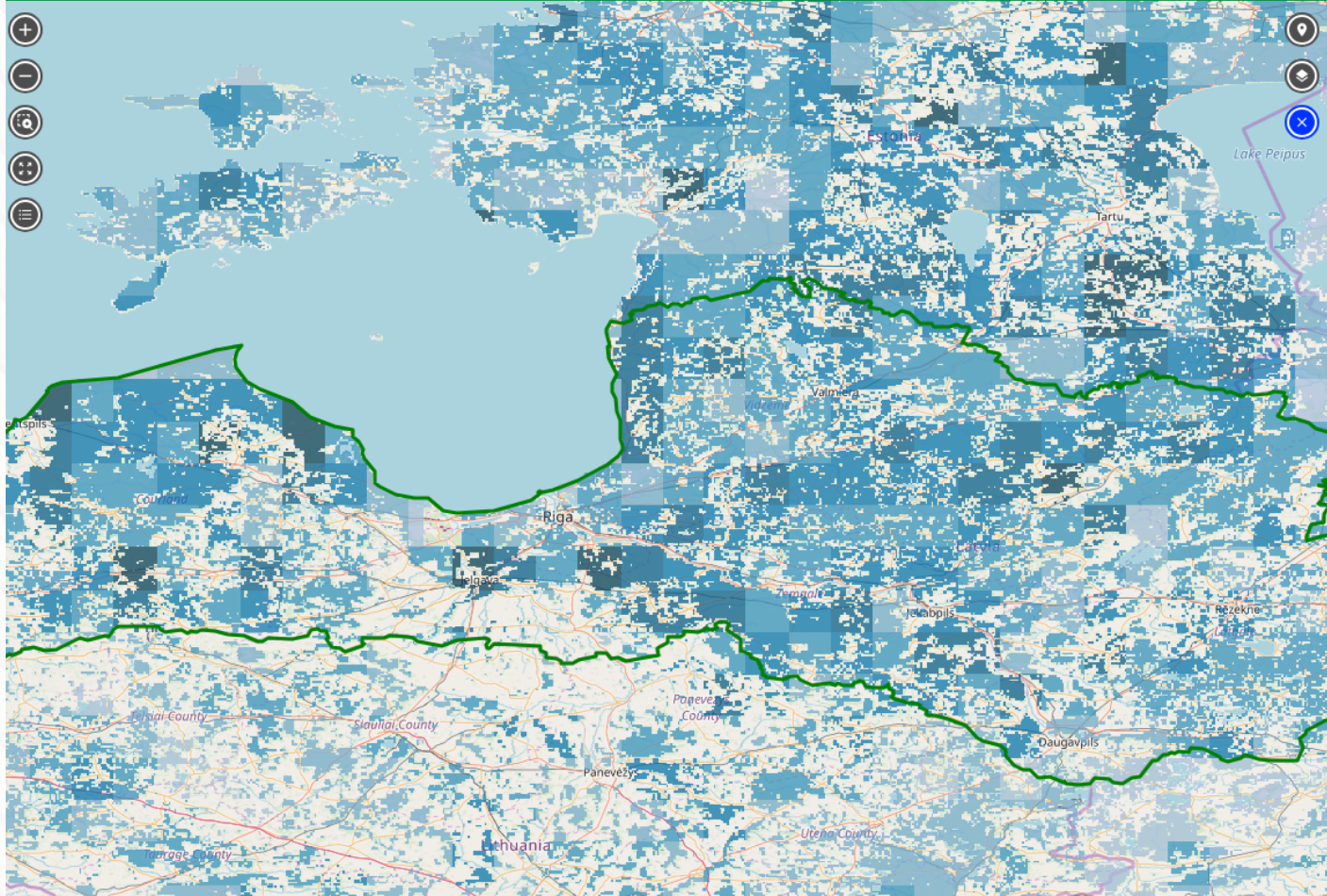
- **Deforestation:** Tree cover loss, mainly due to agricultural expansion
- **Forest harvest:** Forest cover loss due to clear cut harvesting in relation to forest management
- **Fires outside harvested areas:** Forest cover loss from fires occurring outside of forest harvest areas, includes burning of vegetation with no agricultural conversion
- **Fires inside harvested areas:** Forest cover loss from fires occurring in forest harvest areas
- **Extreme events:** Forest cover loss due pests, biotic disturbances or windstorms occurring in forest harvest areas
- **Other types of disturbances:** Short term disturbances in tropical moist forests due to selective logging, low intensity fires or events such as hurricanes, droughts, blowdown

Forest cover change drivers in 2022



Trends in forest cover change for all drivers





**LATVIA** | Global Map of Forest Cover Changes and their Drivers

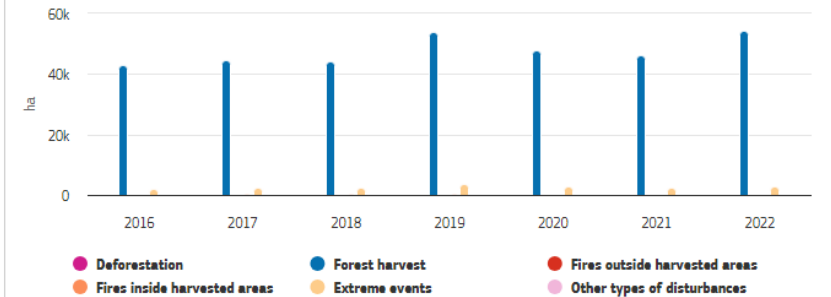
Info

- Deforestation:** Tree cover loss, mainly due to agricultural expansion
- Forest harvest:** Forest cover loss due to clear cut harvesting in relation to forest management
- Fires outside harvested areas:** Forest cover loss from fires occurring outside of forest harvest areas, includes burning of vegetation with no agricultural conversion
- Fires inside harvested areas:** Forest cover loss from fires occurring in forest harvest areas
- Extreme events:** Forest cover loss due pests, biotic disturbances or windstorms occurring in forest harvest areas
- Other types of disturbances:** Short term disturbances in tropical moist forests due to selective logging, low intensity fires or events such as hurricanes, droughts, blowdown

Forest cover change drivers in 2022



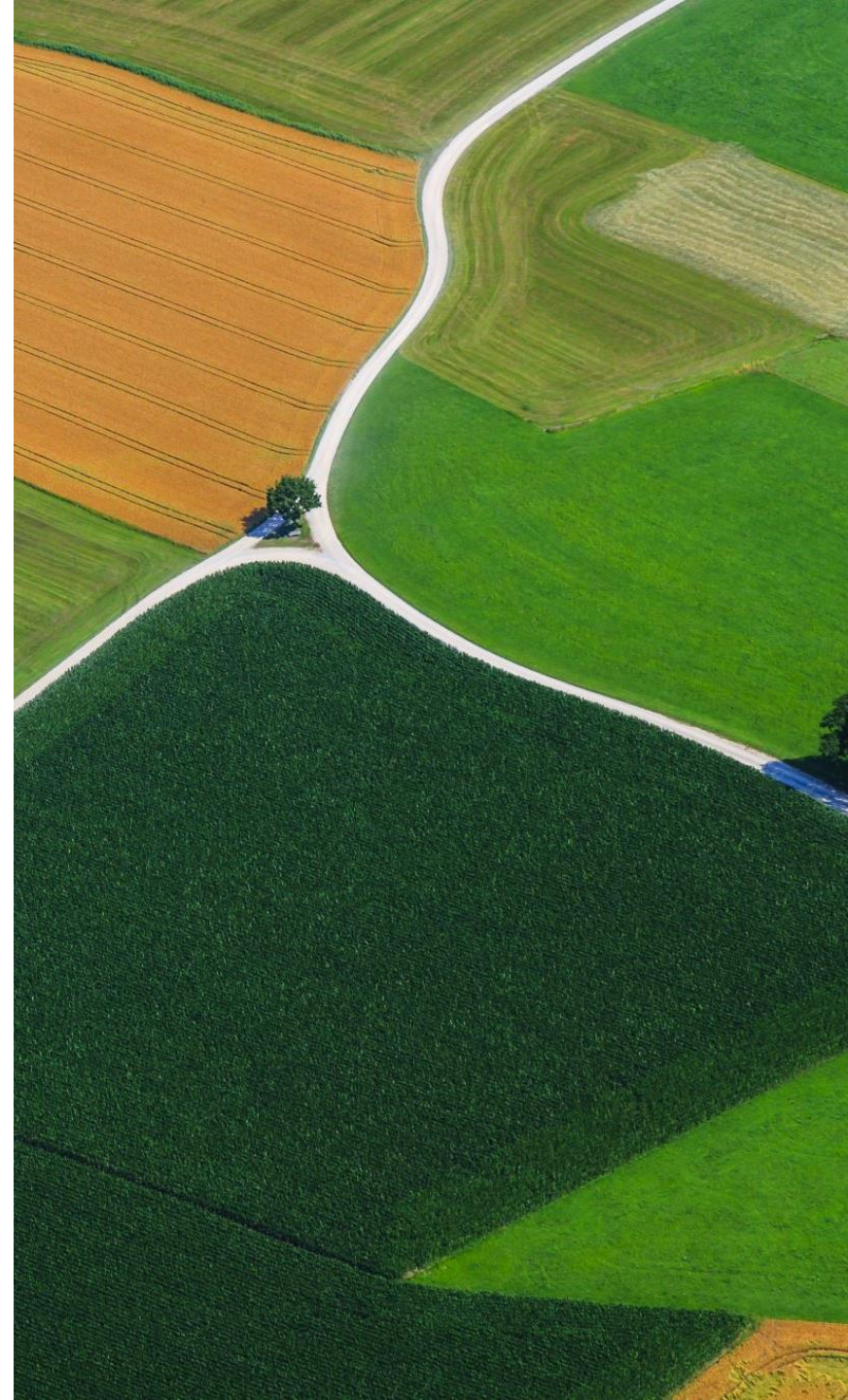
Trends in forest cover change for all drivers





# Tool No.3 Team Europe Initiative on Deforestation- free Value Chains

- Aligned with the EU's Global Gateway strategy, the Initiative aims to support partner countries to transition to sustainable, deforestation-free, and legal agricultural value chains. Collaborative effort of European Commission and EU Member States including Germany, the Netherlands and France, with an initial package of €70 million in funding to implement the Initiative.





# Tool No. 4 Information System

- The Information System is the IT system which will contain the [due diligence](#) statements submitted by operators and traders to comply with the requirements of the Regulation.
- The Commission will provide a training environment and “train-the-trainers” sessions to all interested companies in the summer of 2024, in coordination with member states authorities. This will give all interested stakeholders the opportunity to familiarize themselves with the System well before the Regulation enters into application. The Commission will also then make available user manuals and other relevant self-learning material such as video tutorials.

# Frequently Asked Questions

- **What about products produced in the EU?**
- Products produced inside the EU are **subject to the same requirements as products produced outside the EU**. The Regulation applies to products listed in Annex I, whether there are produced in the EU or imported.

# Why and how must operators collect coordinates?

- Traceability to the plot of land (i.e. the requirement to collect the geographic coordinates of the plots of land where the commodities were produced) is necessary **to demonstrate that there is no deforestation occurring on a specific location.**



## Does all recycled paper/paperboard fall under the scope?

- Annex I states that the Regulation **does not apply to goods if they are produced entirely from material that has completed its lifecycle and would otherwise have been discarded as waste** as defined in Article 3, point (1), of Directive 2008/98/EC. So, no obligation applies under the Regulation in respect of the recycled material.

# Are mass balance chains of custody allowed?

- Mass balance chains of custody that allow for the mixing, at any step of the supply chain, of deforestation-free commodities with commodities of unknown origin or non-deforestation-free commodities **are not allowed** under the Regulation, because they do not guarantee that the commodities placed on the market or exported, are deforestation-free.

# What if part of a product is non-compliant?

- If part of a relevant product is non-compliant, **the non-compliant part needs to be identified and separated from the rest** before the relevant product is placed on the market or exported, and that part may be neither placed on the market nor exported.
- If identification and separation cannot be done, for instance because the non-compliant products have been mixed with the rest, then the whole relevant product is non-compliant as it cannot be guaranteed that the conditions of Article 3 of the Regulation are met and therefore it may be neither placed on the market nor exported.





# Kontakti

## **BM Certification SIA**



+371 67772135



[info@bmcertification.com](mailto:info@bmcertification.com)



Jūrkalnes iela 15,  
Rīga, LV-1046, Latvija