
Par EUSTAFOR leskats Eiropas valsts mežu konferencē 10.- 13.06.2024

Daiga Grīnfelde

AS Latvijas valsts meži

18.06.2024.

EUSTAFOR

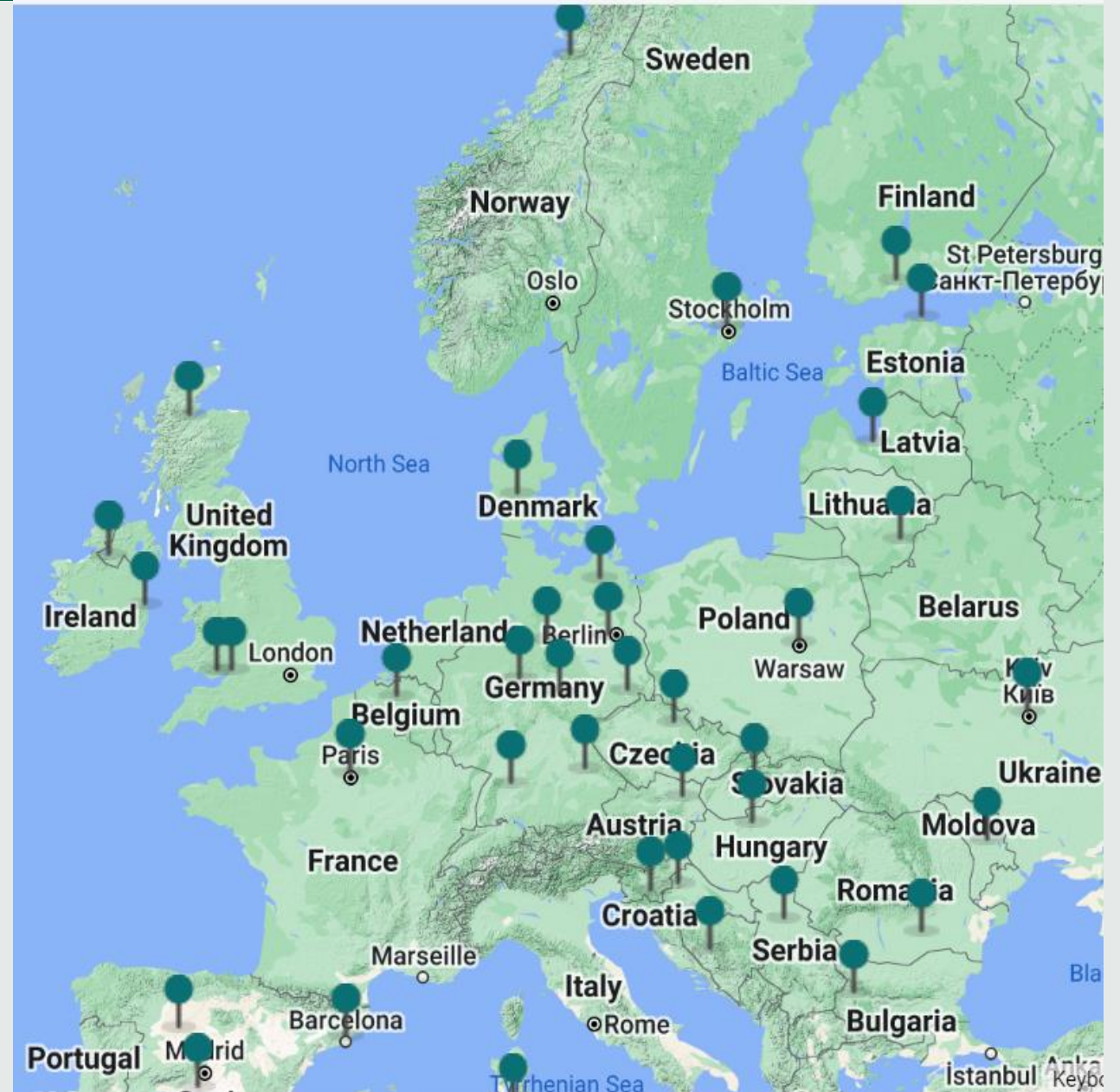
The European State Forest Association

Organizācijas mērķis ir apvienot Eiropas valstu mežu apsaimniekotājus, kā arī pārstāvēt to intereses dažādos starptautiska līmeņa procesos. Eustafors pārstāv Eiropas valsts mežu kompānijas, uzņēmumus un aģentūras, kuras apsaimnieko ilgtspējīgi savas valsts mežus, nodrošinot koksnes piegādi,

Asociācija apvieno 39 dalībniekus no 27 Eiropas valstīm.

LVM piedalās darba grupās, kas saistības ar bioekonomiku un aprites ekonomiku, klimata pārmaiņām, atjaunojamās enerģijas jautājumiem, vides aizsardzības jautājumu risināšanu, piemēram, Natura 2000 mežu apsaimniekošanu, Eiropas savienības nozīmes biotopu apsaimniekošanu. Pašlaik norit aktīvs darbs priekšlikumu sagatavošanai Eiropas Savienības "Zaļā kursa" ietvaros izstrādājamām Atmežošanas direktīvai, RED 3, Dabas atjaunošanas likumam, Ilgtspējas ziņšanas prasību ieviešanai.

<https://www.youtube.com/watch?v=LwB8WgEXPBg>





PATRONAT HONOROWY:



MIECZYŚLAW STRUK
MARSZAŁEK
WOJEWÓDZTWA POMORSKIEGO

European State Forest Conference

10-13 June 2024 Gdańsk, Poland

THE STATE FORESTS

managing Polish forests for nearly 100 years

preencoded.png

- Šogad svin 100 gadu jubileju;
- Apsaimnieko 7.8 mlj. ha mežu platības;
- 26 000 nodarbināto un 350 000 nodarbināto saistītajos uzņēmumos;
- Veido 2.4% no Polijas kopprodukta



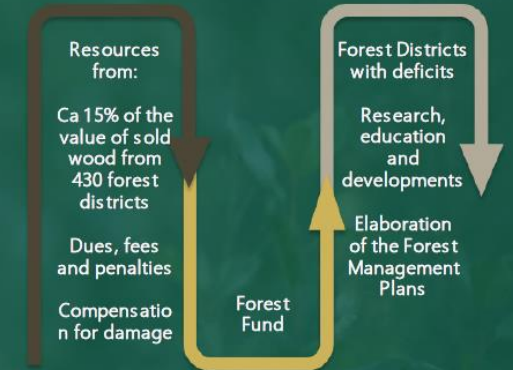
WHO WE ARE

The State Forests is **the largest organization in the EU** that manages public forests.

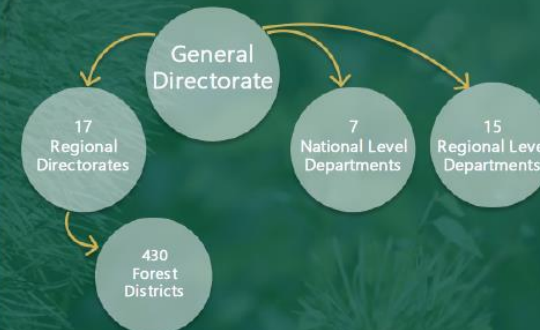
We exist **for a century** - since the establishment of the State Forests National Forest Holding in 1924.

The organization of the SF is based on **the principle of self-financing**. As a result, the State Forests do not benefit from the taxpayers' money. Self-financing is possible because of the existence of the so called **Forest Fund**.

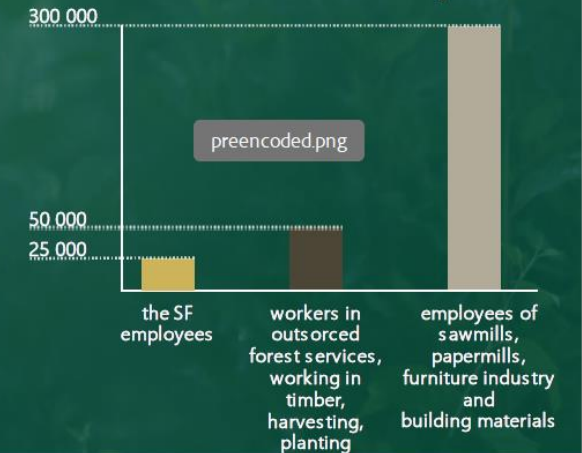
Forest Fund - an internal financial mechanism of the State Forests



The State Forests structure



Forest sector - related jobs



Galvenās atziņas

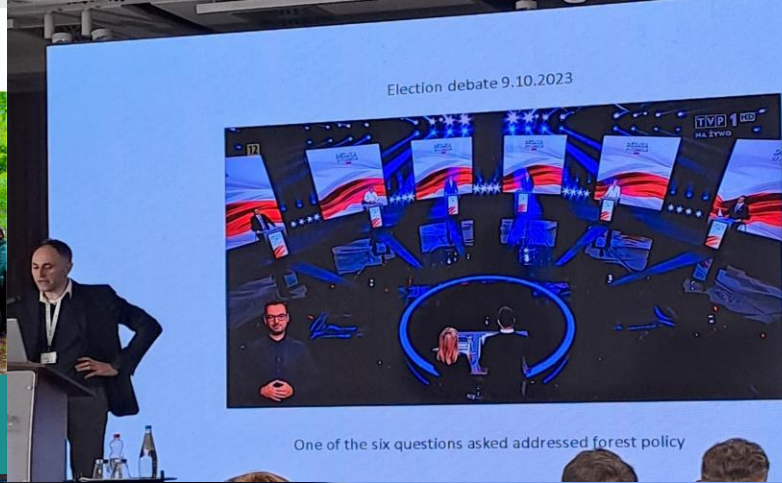
- Polijas valsts mēžos pēdējā pusgadā pievienojušies ap 1000 darbinieku, kopā 26.t., efektivitātes izaicinājumi;
- 2 mežu apsaimniekošanas piemēri piepilsētā un piejūrā. Piepilsētā dabīgā dižskābaržu audzes atjaunošanas sabalansēšana ar rekreācijas iespējām, ierīkotas pastaigu takas un veidotas riteņbraucēju trases.
- Piejūrā projekts ar mūžīgā meža attīstības konceptu – izaicinoši un dārgi.
- Zinātnieku atziņas: mērķtiecīgi apsaimniekoti meži piesaista CO₂, Ja neapsaimnieko, tad meži paši kļūst par emitētājiem. Jāizmanto zinātniskās atziņas, nepietiek ar esošajiem pieņēmumiem uz kuru pamata tiek veidota šobrīd regulatīvā mežu apsaimniekošanas politika. Nāk klāt jaunas pētījumu metodes un gūtās atziņas. 'Jauno pētījumu rezultāti izmantojumi kā bāze, bieži vien pretēji dzirdamajam viedoklim, ka « mežu neaiztikšana glābs pasauli»;
- Vides aktīvistu grafiti;
- Polijas augstākās amatpersonas meža nozares pasākumos.



European State Forest Conference
10-23 June 2024
Gdańsk, Poland



European State Forest Conference
10-23 June 2024
Gdańsk, Poland



Election debate 9.10.2023

One of the six questions asked addressed forest policy

Healthy Forests
Healthy Communities

Threats associated with passive forest management - USA

Forest mortality exceeded net growth on America's national forest timberlands in 2016, based on data publicly available from the U.S. Forest Service.

Our federal forests are not being actively managed, whether through logging, thinning and prescribed fire. As a result, our forests are dying at an astonishing rate. And today we have millions of acres with dense stands of trees that compete for light and water, making them more vulnerable to changing climate conditions, drought and insect infestations.

And as forest mortality has increased, our forests have become net carbon emitters. In California, for example, research suggests that that greenhouse gases are billowing out of the state's forests faster than they are being sucked back in.

Annual Net Growth, Mortality, and Harvest on National Forest Timberlands - 1952-2016

Year	Net Growth	Harvest	Mortality
1952	1000	500	500
1962	2500	1000	1000
1976	3200	1000	1000
1986	4200	1500	1500
1996	4300	1500	1500
2006	4400	1500	1500
2011	3600	1500	1500
2016	1000	1500	3200

Legend: Net Growth (Green), Harvest (Blue), Mortality (Red)

Source: <https://h.../>

2024
eustafor

Marco Onida
DG Environment
EU Commission

Forest multifunctionality

in the EU forest policy and legislation

The EU response

- European Green Deal Ch. 2.1.7 COM (2019) 640
- Biodiversity Strategy for 2030 Ch. 2.2.4 COM (2020) 380
- EU Forest Strategy for 2030 COM (2021) 572
- Forest Monitoring Law COM (2023) 1726
- New Forest Governance 2023 COM (2023) 727
- Guidelines for biodiversity
- Payments for ecosystem services SWD (2023) 285
- closer to nature forestry (CNF) SWD(2023) 284
- Primary and Old-Growth Forests SWD (2023) 62
- Biodiversity friendly afforestation, reforestation and tree planting SWD (2023) 61
- certification
- 3 billion additional trees pledge SWD (2021) 651
- Forest Management Plans comparative assessment
- SFM thresholds and ranges

Who has been talking about forest management in Poland?

Review of articles on „forestry” in 6 major Polish newspapers and magazines 2000-2022

Results: 135 articles

Number of articles on forestry (2000-2022)

Year	Number of articles
2000	0
2001	0
2002	0
2003	0
2004	0
2005	1
2006	2
2007	4
2008	3
2009	3
2010	5
2011	4
2012	4
2013	4
2014	9
2015	1
2016	9
2017	25
2018	11
2019	5
2020	11
2021	19
2022	20

2024
eustafor

Lech Wałęsa
Former
President of the Republic of Poland

How to secure legitimacy of public forest organisations?

LASY
n=459

- Develop a conflict protection system - methodological approach to identifying and resolving local social conflicts over forest management
- Employ specialists not only in dealing with forests but also in working with people,
- Recognise legitimate differences in beliefs, values and interests concerning forests and their use

An aerial photograph of a vast forest landscape. The trees are in various shades of green and yellow, suggesting an autumn setting. A dirt road winds through the forest on the right side. The sky is filled with large, white and grey clouds, with some blue visible. The horizon is flat and distant.

Veidojam plaukstošu Latviju!

**Eiropas līderis tālredzīgā dabas kapitāla
pārvaldībā un vairošanā**